



PROJECT SAMPLE





30 N GOULD ST STE N, SHERIDAN, WY 82801 | +1 (737) 316 2477 | INFO@SEEKONESTIMATES.COM





DRYWALL ESTIMATE SAMPLE

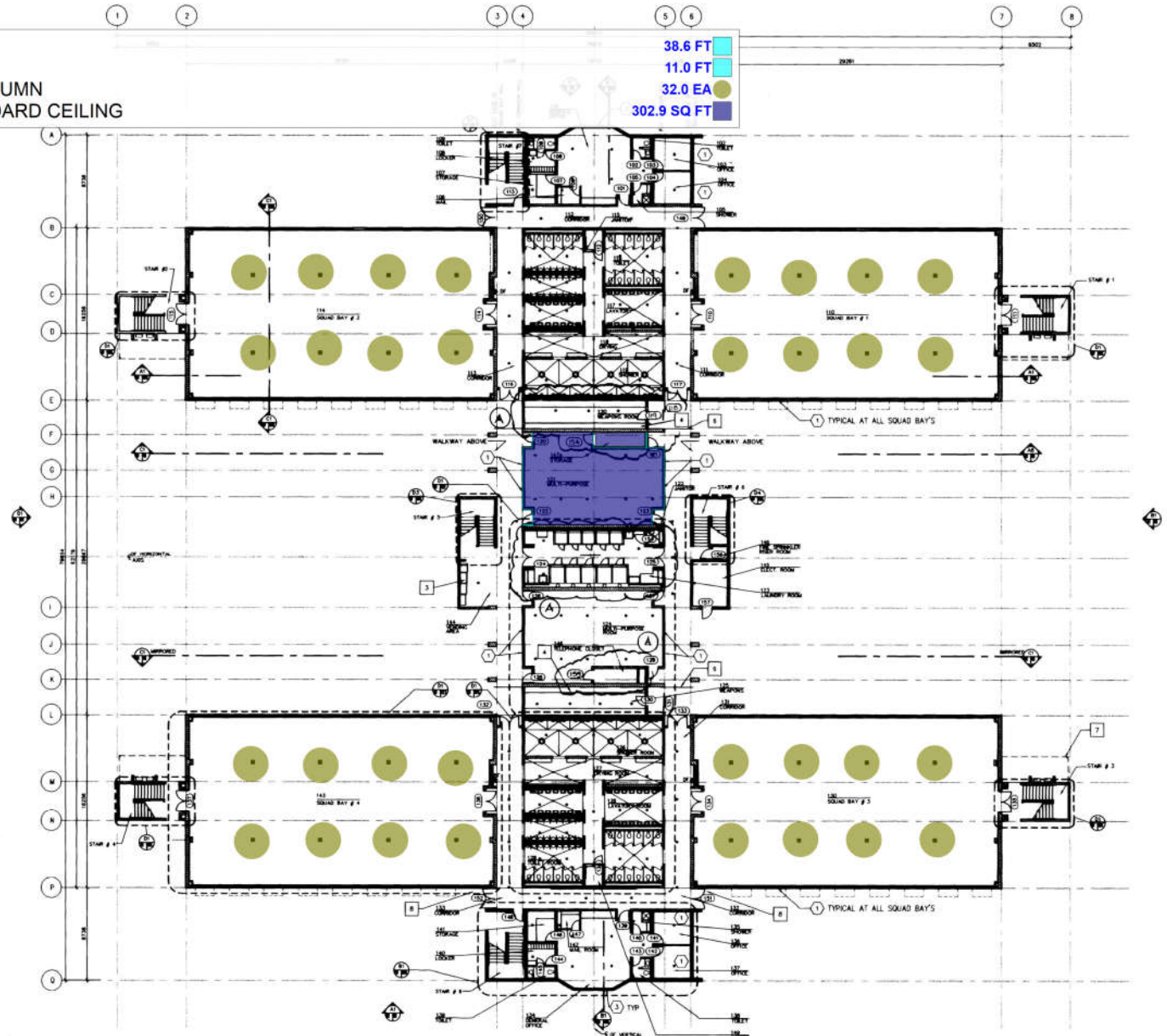
S#	DWG #	DETAIL #	CSI NO	DESCRIPTION	QTY.	UNIT	WASTAGE %	QTY W/ WASTAGE	MATERIAL COST	LABOR COST	TOTAL COST
DIVISION 01 - GENERAL CONDITIONS											
1				GENERAL REQUIREMENTS	1	LS	0%	1	\$ -	\$ -	\$ -
				<i>Sub total</i>							\$ -
DIVISION 03 - CONCRETE											
			03 30 00	CAST-IN-PLACE CONCRETE							
2	A1	A1		(1'-0"x1'-0"x9'-0") Reinforcement Conc. Column = (32'-EA)	10.7	CY	10%	12	\$ 385.20	\$ 320.00	\$ 8,274.35
3	A1	A1		(1'-0"x1'-0"x10'-8") Reinforcement Conc. Column = (64'-EA)	25.3	CY	10%	28	\$ 385.20	\$ 320.00	\$ 19,601.01
				<i>Sub total</i>							\$ 27,875.35
			05 00 00	DIVISION 05 - METALS							
			05 12 00	STRUCTURAL STEEL FRAMING							
4	A1 TO A6	A1 TO A6		Ceiling Metal Framing W/ - 25mmx76mm(1"x3") metal Hat Channel @ 610mm (24") o.c - 9 GA Hanger wires 1219 mm o.c @ 4'-0" 3 turns and ,ax of 203mm 8" - 38mm (1-1/2") Cold Rolled Mtl Channel	106551	SF	10%	117206	\$ 1.98	\$ 1.20	\$ 372,715.40
				<i>Sub total</i>							\$ 372,715.40
DIVISION 07 - THERMAL AND MOISTURE PROTECTION											
			07 11 00	DAMP-PROOFING							
5	A1 to A29	A1 to A29		1 layer Waterproof Membrane	2775	SF	10%	3053	\$ 0.62	\$ 0.45	\$ 3,266.18
				<i>Sub total</i>							\$ 3,266.18
DIVISION 09 - FINISHES											
			09 21 16	GYPSUM BOARD ASSEMBLIES							
				Wall Type "1" (10'-8"H)	250						
6				(1) Layer 16mm Water Resistant Gypsum Board On Both Side	5330	SF	10%	5863	\$ 0.85	\$ 0.75	\$ 9,380.80
7				Acoustical Batt Insulation	2665	SF	10%	2932	\$ 0.72	\$ 0.65	\$ 4,022.02
8				(102mm) 4" Metal Stud @ 16" O.c -W/ Top & Bottom Runner Track (EA 188, 12'-0" H)	250	LF	10%	275	\$ 2.10	\$ 1.25	\$ 921.25
9				Acoustical Gasket or Sealant	1000	LF	10%	1100	\$ 0.32	\$ 0.40	\$ 792.00
				Wall Type "1A" (10'-8"H)	116						
10				(1) Layer 16mm Water Resistant Gypsum Board On Both Side	2473	SF	10%	2720	\$ 0.85	\$ 0.75	\$ 4,352.69
11				Acoustical Batt Insulation	1237	SF	10%	1360	\$ 0.72	\$ 0.65	\$ 1,866.22
12				(152mm) 6" Metal Stud @ 16" O.c -W/ Top & Bottom Runner Track (EA 88, 12'-0" H)	116	LF	10%	128	\$ 2.45	\$ 1.35	\$ 484.88
13				Acoustical Gasket or Sealant	464	LF	10%	510	\$ 0.72	\$ 0.40	\$ 571.65
				Wall Type "1B" (10'-8"H)	54						
14				(1) Layer 16mm Water Resistant Gypsum Board On Both Side	1151	SF	10%	1266	\$ 0.85	\$ 0.75	\$ 2,026.25
15				Acoustical Batt Insulation	576	SF	10%	633	\$ 0.72	\$ 0.65	\$ 868.76
16				(152mm) 6" Metal Stud @ 16" O.c -W/ Top & Bottom Runner Track (EA 41, 12'-0" H)	54	LF	10%	59	\$ 2.45	\$ 1.35	\$ 225.72
17				Acoustical Gasket or Sealant	216	LF	10%	238	\$ 0.72	\$ 0.40	\$ 266.11
				Wall Type "1C" (10'-8"H)	23						
18				(1) Layer 16mm Water Resistant Gypsum Board On Both Side	490	SF	10%	539	\$ 0.85	\$ 0.75	\$ 863.03
19				Acoustical Batt Insulation	245	SF	10%	270	\$ 0.72	\$ 0.65	\$ 370.03
20				(152mm) 6" Metal Stud @ 16" O.c -W/ Top & Bottom Runner Track (EA 18, 12'-0" H)	23	LF	10%	25	\$ 2.45	\$ 1.35	\$ 96.14
21				Acoustical Gasket or Sealant	92	LF	10%	101	\$ 0.72	\$ 0.40	\$ 113.34
				Wall Type "2A & 2" (10'-8"H)	566						
22				(1) Layer 16mm Water Resistant Gypsum Board On Both Side	12067	SF	10%	13274	\$ 0.85	\$ 0.75	\$ 21,238.13
23				Acoustical Batt Insulation	6034	SF	10%	6637	\$ 0.72	\$ 0.65	\$ 9,105.85
24				(92mm) 3-5/8" Metal Stud @ 16" O.c -W/ Top & Bottom Runner Track (EA 426, 12'-0" H)	566	LF	10%	623	\$ 2.45	\$ 1.35	\$ 2,365.88
25				Acoustical Gasket or Sealant	2264	LF	10%	2490	\$ 0.72	\$ 0.40	\$ 2,789.25
				Wall Type "3" (10'-8"H)	380						
26				(1) Layer 16mm Fire Resistant Gypsum Board On One Side	8102	SF	10%	8912	\$ 1.02	\$ 0.75	\$ 15,773.82
27				(41mm) 1-5/8" Metal Stud Furring @ 16" O.c -W/ Top & Bottom Runner Track (EA 285, 12'-0" H)	380	LF	10%	418	\$ 1.75	\$ 0.98	\$ 1,141.14
28				Acoustical Gasket or Sealant	760	LF	10%	836	\$ 0.72	\$ 0.40	\$ 936.32
				Wall Type "3B" (10'-8"H)	242						
29				(1) Layer 16mm Fire Resistant Gypsum Board On One Side	5159	SF	10%	5675	\$ 1.02	\$ 0.75	\$ 10,045.43
30				(102mm) 4" Metal Stud Furring @ 16" O.c -W/ Top & Bottom Runner Track (EA 181, 12'-0" H)	242	LF	10%	266	\$ 2.10	\$ 1.25	\$ 891.77
31				Acoustical Gasket or Sealant	484	LF	10%	532	\$ 0.72	\$ 0.40	\$ 596.29
				Wall Type "5" (10'-8"H)	183						
32				(1) Layer 16mm Cementitious Baker Water Resistant Gypsum Board On One Side	1951	SF	10%	2146	\$ 1.48	\$ 0.75	\$ 4,785.26
33				(2)(102mm) 4" Metal Stud @ 16" O.c -W/ Top & Bottom Runner Track (EA 274, 12'-0" H)	366	LF	10%	403	\$ 2.10	\$ 1.25	\$ 1,348.71
34				Acoustical Gasket or Sealant	366	LF	10%	403	\$ 0.72	\$ 0.40	\$ 450.91
				Wall Type "6&6A" (10'-8"H)	408						
35				(1) Layer 16mm Fire Resistant Gypsum Board On One Side	4349	SF	10%	4784	\$ 1.02	\$ 0.75	\$ 8,468.05
36				(92mm) 3-5/8" Metal Stud @ 16" O.c -W/ Top & Bottom Runner Track (EA 306, 12'-0" H)	408	LF	10%	449	\$ 1.85	\$ 1.15	\$ 1,346.40
37				Acoustical Sealant	816	LF	10%	898	\$ 0.72	\$ 0.40	\$ 1,005.31
				Wall Type "7" (10'-8"H)	408						
38				(1) Layer 16mm Fire Resistant Gypsum Board On One Side	4349	SF	10%	4784	\$ 1.02	\$ 0.75	\$ 8,468.05
				Wall Type "9, 9A, 9B" (10'-8"H)	2400						
39				(1) Layer 16mm Fire Resistant Gypsum Board On One Side	25584	SF	10%	28142	\$ 1.02	\$ 0.75	\$ 49,812.05
40				38mm Rigid Insulation	25584	SF	10%	28142	\$ 1.45	\$ 0.98	\$ 68,386.03
41				(38mm) Z Furring @ 16" O.c	25584	SF	10%	28142	\$ 1.85	\$ 1.20	\$ 85,834.32
42				Acoustical Gasket or Sealant	9600	LF	10%	10560	\$ 0.72	\$ 0.40	\$ 11,827.20
				Wall Type "10" (10'-8"H)	80						
43				(1) Layer 16mm Fire Resistant Gypsum Board On One Side	720	SF	10%	792	\$ 1.02	\$ 0.75	\$ 1,401.84
44				38mm Rigid Insulation	853	SF	10%	938	\$ 1.45	\$ 0.98	\$ 2,279.53
45				(38mm) Z Furring @ 16" O.c	853	SF	10%	938	\$ 1.85	\$ 1.20	\$ 2,861.14
46				Acoustical Gasket or Sealant	320	LF	10%	352	\$ 0.72	\$ 0.40	\$ 394.24
				Wall Type "12" (10'-8"H)	80						
47				(1) Layer 16mm Fire Resistant Gypsum Board On One Side	1706	SF	10%	1876	\$ 1.02	\$ 0.75	\$ 3,320.80
48				(102mm) 4" Metal Stud Furring @ 16" O.c -W/ Top & Bottom Runner Track (EA 181, 12'-0" H)	80	LF	10%	88	\$ 2.10	\$ 1.25	\$ 294.80

49			Acoustical Gasket or Sealant	160	LF	10%	176	\$	0.72	\$	0.40	\$	197.12
			Wall Type "1" (9'-0"H)	125									
50			(1) Layer 16mm Water Resistant Gypsum Board On Both Side	2254	SF	10%	2479	\$	0.85	\$	0.75	\$	3,966.65
51			Acoustical Batt Insulation	1127	SF	10%	1240	\$	0.72	\$	0.65	\$	1,700.70
52			(102mm) 4" Metal Stud @ 16" O.c -W/ Top & Bottom Runner Track (EA 95, 10'-0" H)	125	LF	10%	138	\$	2.10	\$	1.25	\$	461.40
53			Acoustical Gasket or Sealant	501	LF	10%	551	\$	0.72	\$	0.40	\$	617.03
			Wall Type "1A" (9'-0"H)	58									
54	A1 to A29	A1 to A29	(1) Layer 16mm Water Resistant Gypsum Board On Both Side	1044	SF	10%	1148	\$	0.85	\$	0.75	\$	1,837.44
55			Acoustical Batt Insulation	522	SF	10%	574	\$	0.72	\$	0.65	\$	787.80
56			(152mm) 6" Metal Stud @ 16" O.c -W/ Top & Bottom Runner Track (EA 43, 10'-0" H)	58	LF	10%	64	\$	2.45	\$	1.35	\$	242.44
57			Acoustical Gasket or Sealant	232	LF	10%	255	\$	0.72	\$	0.40	\$	285.82
			Wall Type "1B" (9'-0"H)	27									
58			(1) Layer 16mm Water Resistant Gypsum Board On Both Side	486	SF	10%	535	\$	0.85	\$	0.75	\$	855.36
59			Acoustical Batt Insulation	243	SF	10%	267	\$	0.72	\$	0.65	\$	366.74
60			(152mm) 6" Metal Stud @ 16" O.c -W/ Top & Bottom Runner Track (EA 20, 10'-0" H)	27	LF	10%	30	\$	2.45	\$	1.35	\$	112.86
61			Acoustical Gasket or Sealant	108	LF	10%	119	\$	0.72	\$	0.40	\$	133.06
			Wall Type "1C" (9'-0"H)	12									
62			(1) Layer 16mm Water Resistant Gypsum Board On Both Side	207	SF	10%	228	\$	0.85	\$	0.75	\$	364.32
63			Acoustical Batt Insulation	104	SF	10%	114	\$	0.72	\$	0.65	\$	156.20
64			(152mm) 6" Metal Stud @ 16" O.c -W/ Top & Bottom Runner Track (EA 9, 10'-0" H)	12	LF	10%	13	\$	2.45	\$	1.35	\$	48.07
65			Acoustical Gasket or Sealant	46	LF	10%	51	\$	0.72	\$	0.40	\$	56.67
			Wall Type "2A & 2" (9'-0"H)	283									
66			(1) Layer 16mm Water Resistant Gypsum Board On Both Side	5094	SF	10%	5603	\$	0.85	\$	0.75	\$	8,965.44
67			Acoustical Batt Insulation	2547	SF	10%	2802	\$	0.72	\$	0.65	\$	3,843.93
68			(92mm) 3-5/8" Metal Stud @ 16" O.c -W/ Top & Bottom Runner Track (EA 212, 10'-0" H)	283	LF	10%	311	\$	1.85	\$	1.15	\$	933.90
69			Acoustical Gasket or Sealant	1132	LF	10%	1245	\$	0.72	\$	0.40	\$	1,394.62
			Wall Type "3" (9'-0"H)	190									
70			(1) Layer 16mm Fire Resistant Gypsum Board On One Side	3420	SF	10%	3762	\$	1.02	\$	0.75	\$	6,658.74
71			(41mm) 1-5/8" Metal Stud Furring @ 16" O.c -W/ Top & Bottom Runner Track (EA 143, 10'-0" H)	190	LF	10%	209	\$	1.45	\$	0.98	\$	507.87
72			Acoustical Gasket or Sealant	380	LF	10%	418	\$	0.72	\$	0.40	\$	468.16
			Wall Type "3B" (9'-0"H)	121									
73			(1) Layer 16mm Fire Resistant Gypsum Board On One Side	2178	SF	10%	2396	\$	1.02	\$	0.75	\$	4,240.57
74			(102mm) 4" Metal Stud Furring @ 16" O.c -W/ Top & Bottom Runner Track (EA 92, 10'-0" H)	121	LF	10%	133	\$	2.10	\$	1.25	\$	445.89
75			Acoustical Gasket or Sealant	242	LF	10%	266	\$	0.72	\$	0.40	\$	298.14
			Wall Type "5" (9'-0"H)	92									
76			(1) Layer 16mm Cementitious Baker Water Resistant Gypsum Board On One Side	824	SF	10%	906	\$	1.48	\$	0.75	\$	2,020.05
77			(2)(102mm) 4" Metal Stud @ 16" O.c -W/ Top & Bottom Runner Track (EA 140, 10'-0" H)	183	LF	10%	201	\$	2.10	\$	1.25	\$	674.36
78			Acoustical Gasket or Sealant	183	LF	10%	201	\$	0.72	\$	0.40	\$	225.46
			Wall Type "6&6A" (9'-0"H)	204									
79			(1) Layer 16mm Fire Resistant Gypsum Board On One Side	1836	SF	10%	2020	\$	1.02	\$	0.75	\$	3,574.69
80			(92mm) 3-5/8" Metal Stud @ 16" O.c -W/ Top & Bottom Runner Track (EA 154, 10'-0" H)	204	LF	10%	224	\$	1.85	\$	1.15	\$	673.20
81			Acoustical Sealant	408	LF	10%	449	\$	0.72	\$	0.40	\$	502.66
			Wall Type "7" (9'-0"H)	204									
82			(1) Layer 16mm Fire Resistant Gypsum Board On One Side	1836	SF	10%	2020	\$	1.02	\$	0.75	\$	3,574.69
			Wall Type "9, 9A, 9B" (9'-0"H)	1200									
83			(1) Layer 16mm Fire Resistant Gypsum Board On one Side	10800	SF	10%	11880	\$	1.02	\$	0.75	\$	21,027.60
84			38mm Rigid Insulation	10800	SF	10%	11880	\$	1.45	\$	0.98	\$	28,868.40
85			(38mm) Z Furring @ 16" O.c	10800	SF	10%	11880	\$	1.85	\$	1.20	\$	36,234.00
86			Acoustical Gasket or Sealant	4800	LF	10%	5280	\$	0.72	\$	0.40	\$	5,913.60
			Wall Type "10" (9'-0"H)	40									
87			(1) Layer 16mm Fire Resistant Gypsum Board On Both Side	360	SF	10%	396	\$	1.02	\$	0.75	\$	700.92
88			38mm Rigid Insulation	360	SF	10%	396	\$	1.45	\$	0.98	\$	962.28
89			(38mm) Z Furring @ 16" O.c	360	SF	10%	396	\$	1.85	\$	1.20	\$	1,207.80
90			Acoustical Gasket or Sealant	160	LF	10%	176	\$	0.72	\$	0.40	\$	197.12
			Wall Type "12" (9'-0"H)	40									
91			(1) Layer 16mm Fire Resistant Gypsum Board On One Side	720	SF	10%	792	\$	1.02	\$	0.75	\$	1,401.84
92			(102mm) 4" Metal Stud Furring @ 16" O.c -W/ Top & Bottom Runner Track (EA 31, 10'-0" H)	40	LF	10%	44	\$	2.10	\$	1.25	\$	147.40
93			Acoustical Gasket or Sealant	80	LF	10%	88	\$	0.72	\$	0.40	\$	98.56
			Soffit										
94			2'-0" Soffit W/ - 5/8" Gypsum Board - Framing	250	SF	10%	275	\$	1.80	\$	1.20	\$	824.47
95			0'-6" Soffit W/ - 5/8" Gypsum Board - Framing	56	SF	10%	62	\$	1.46	\$	1.20	\$	164.81
			Ceiling										
96			5/8" Gypsum board Water Resistant ceiling	14880	SF	10%	16368	\$	1.20	\$	0.98	\$	35,682.24
97			5/8" Gypsum board ceiling	15897	SF	10%	17487	\$	1.20	\$	0.98	\$	38,121.01
98			2x4' Acoustical ceiling	16356	SF	10%	17992	\$	3.20	\$	1.85	\$	90,857.41
99			5/8" Gypsum board ceiling OR (Concrete) ceiling	59419	SF	10%	65361	\$	1.20	\$	0.98	\$	142,486.81
100			Taping (180' L)	339	ROLLS	10%	372	\$	9.25	\$	12.00	\$	7,913.09
101			Mudding Compound (12 LBS)	861	BUCKETS	10%	947	\$	9.00	\$	15.00	\$	22,736.07
102			Screws (244 EA)	1124	BOXES	10%	1236	\$	32.00	\$	-	\$	39,557.80
			093013 CERAMIC TILING										
103	A1 to A29	A1 to A29	6" Ceramic tile base	5823	LF	10%	6405	\$	2.98	\$	1.85	\$	30,937.60
104	A1 to A29	A1 to A29	4" Vinyl cove base	3349	LF	10%	3684	\$	1.98	\$	1.20	\$	11,713.72
105	A1 to A29	A1 to A29	Ceramic Wall tile as:- - Datile no.GK 600 White	21375	SF	10%	23513	\$	2.10	\$	1.85	\$	92,874.90
			MISC										
106	A1 to A29	A1 to A29	Thin Set Setting Mortar Bed	21375	SF	10%	23513	\$	1.20	\$	0.65	\$	43,498.37
			09 91 00 PAINTING										
107	A1 to A29	A1 to A29	Gyp Board Ceiling Paint -Eggshell -Frazee no CW048W Composed	90495	SF	10%	99544	\$	0.72	\$	0.80	\$	151,307.21
108			Paint -Eggshell -Frazee no CW048W Composed	7102	LF	10%	7812	\$	0.45	\$	0.35	\$	6,249.67
109			Paint enamel semi-gloss (Paint -Eggshell -Frazee no CW048W Co	26109	SF	10%	28720	\$	0.72	\$	0.80	\$	43,654.25
			Exterior Finishes										
110	A1 to A29	A1 to A29	254" mm 10" masonry block -split face main block color castle gray	517	SF	10%	569	\$	9.62	\$	4.25	\$	7,887.72
111	A1 to A29	A1 to A29	Spandrel panel	486	SF	10%	534	\$	42.32	\$	8.62	\$	27,224.12
112	A1 to A29	A1 to A29	8" masonry block - split face main block color " castle gray"	3687	SF	10%	4056	\$	11.20	\$	5.30	\$	66,917.42

113	A1 to A29	A1 to A29	Cement plaster stucco color expo color no 45	27222	SF	10%	29944	\$ 6.32	\$ 4.85	\$ 334,479.66
			Sub total							\$1,687,429.31
BASE BID										\$2,091,286.24
OVERHEADS @ 10										
PROFITS @ 10										
CONTINGENCY @ 5										
TOTAL COST WITH OVERHEADS + PROFIT										\$ 522,821.56
TOTAL BID										\$2,614,107.80
General Exclusions: Any kind of controlled inspection, contaminated material, architect and engineering fees, security, building charges, sign off, asbestos removal, protection of adjoining building (if any), any work not mentioned above.										
General Notes: The prices used while preparing the estimate were taken from RSMMeans online i.e. the standard pricing & the company is not responsible for any kind of variations in the prices. So, it is preferred to review the prices.										






-  WALL TYPE 1
-  WALL TYPE 9A
-  CONCRETE COLUMN
-  5/8" GYPSUM BOARD CEILING


-  38.6 FT
-  11.0 FT
-  32.0 EA
-  302.9 SQ FT



D1 FIRST FLOOR PLAN
SCALE: 1/200



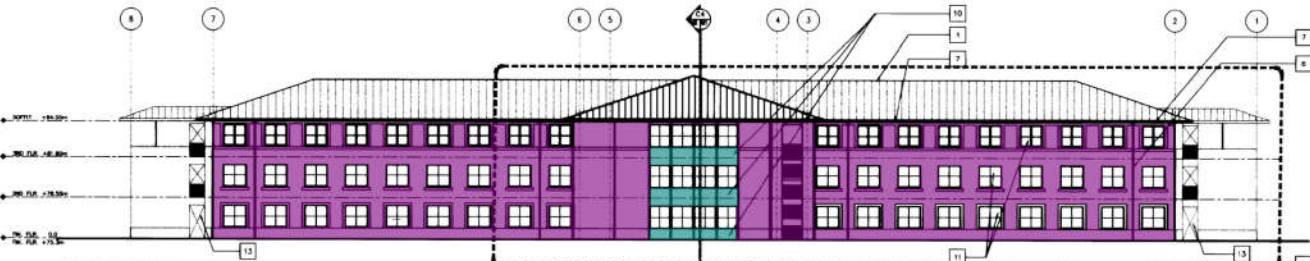
- LEGEND**
-  TYPICAL WALL SYMBOL
SEE SHEET A28
 -  TYPICAL DOOR SYMBOL SEE
SHEET A14
 -  TYPICAL WINDOW SYMBOL
SEE SHEET A15
 -  ROOM NUMBER
ROOM NAME TYPICAL ROOM FINISH SCHEDULE
SEE SHFTT A17 & A11
 -  METAL SUNSHADE

- NOTES**
- 1 SEE ENLARGED SCALE PLANS FOR INTERIOR DIMENSIONS AND WALL TYPES
 - 2 SEE ENLARGED SCALE PLANS FOR DET. REFERENCES
 - 3 VENDING MACHINE (GFG)
 - 4 RACKS (GFG)
 - 5 EXTERIOR WALL AT FIRST FLOOR ARE TYPE  TYPICAL SEE SHEET A11
 - 6 57mm (2 1/4") SEISMIC JOINT SEE LARGE SCALE PLANS FOR DETAIL REFERENCES.
 - 7 101mm x 101mm (4" x 4") TUBE STEEL COLUMN TYP.
 - 8 PROVIDE SUNSHADE AT ALL SOUTH FACING SQUAD BAY WINDOWS. DO NOT PROVIDE SUNSHADE AT WINDOWS NEXT TO DOOR NUMBER 151 AND 152.

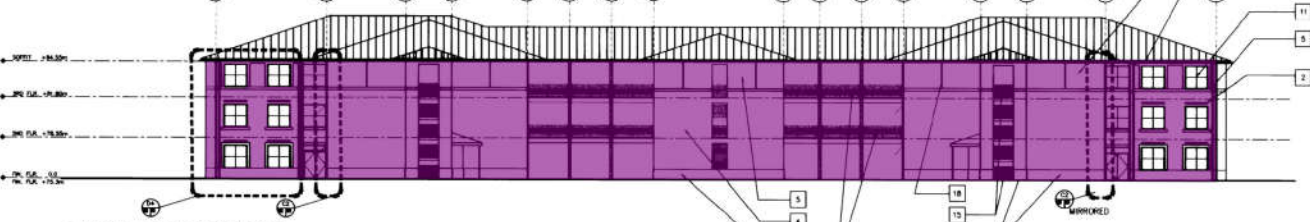
GRAPHIC SCALE

SCALE = 1/200

ARCHITECT
LARRY A. ROGGENSACK
NO. C 10079
STATE OF CALIFORNIA

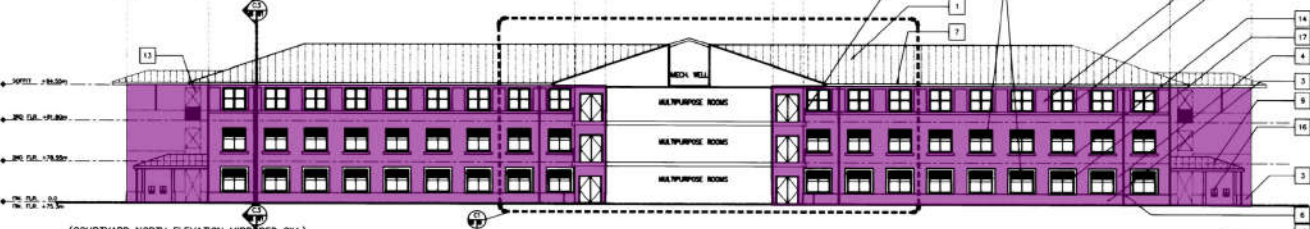


(SOUTH ELEVATION MIRRORED SIM.)
NORTH ELEVATION
SCALE: 1:200

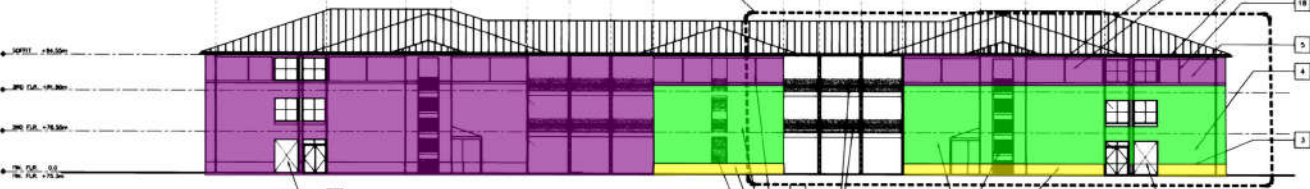


(SOUTH ELEVATION MIRRORED SIM.)
EAST ELEVATION
SCALE: 1:200

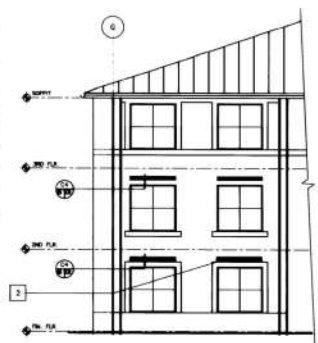
- 5- CEMENT PLASTER STUCCO COLOR EXPO COLOR NO 45 27222.2 SQ FT
- 10- SPANDREL PANEL 485.9 SQ FT
- 8" MANSORY BLOCK - SPLIT FACE MAIN BLOCK COLOR " CASTLE GRAY" 3686.9 SQ FT
- 254" MM 10" MANSORY BLOCK -SPLIT FACE MAIN BLOCK COLOR CASTLE GRAY 517.0 SQ FT



(COURTYARD NORTH ELEVATION MIRRORED SIM.)
COURTYARD SOUTH ELEVATION
SCALE: 1:200



WEST ELEVATION
SCALE: 1:200



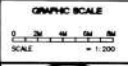
PARTIAL ELEVATION
SCALE: 1:100

LEGEND

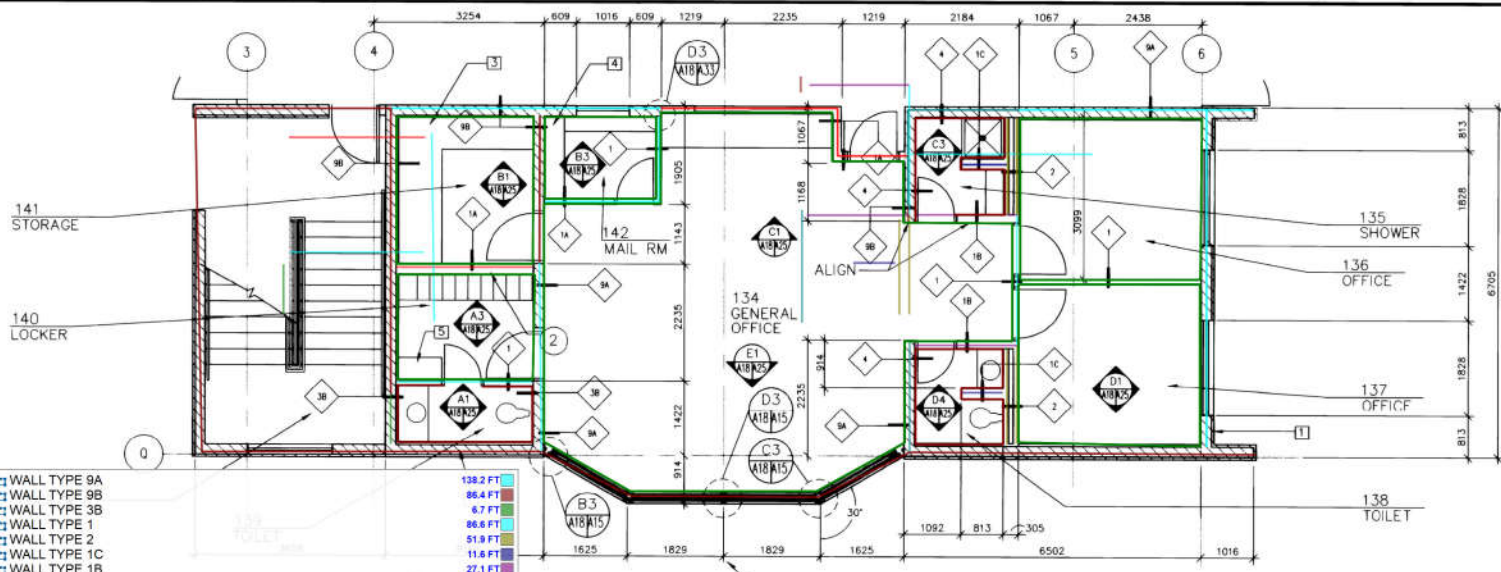
1	STANDING SEAM METAL ROOF - 102.305mm ROOF SLOPE COLOR: "COLONIAL RED" (4:12)
2	LOUVER - SEE DETAIL C4/A31 COLOR: "OLD TOWN GRAY"
3	254mm (10") MASONRY BLOCK - SPLIT FACE BASE BLOCK COLOR: "CHOCOLATE"
4	203mm (8") MASONRY BLOCK - SPLIT FACE MAIN BLOCK COLOR: "CASTLE GRAY"
5	CEMENT PLASTER OVER 152mm (6") CONC. BLOCK STUCCO COLOR: "EXPO COLOR #45"
6	METAL DOWNSPOUT CENTER BETWEEN WINDOWS (TYPICAL) COLOR: "OLD TOWN GRAY"
7	METAL GLITTER COLOR: "COLONIAL RED"
8	METAL LOUVER SUNSHADE - PREFINISH SOUTH FACING SEE DETAIL D4/A33. COLOR: "COLONIAL RED"
9	STANDING SEAM METAL CANOPY - 102.305mm ROOF SLOPE COLOR: "COLONIAL RED" (4:12)
10	SPANDREL PANEL GLAZING PER SPECIFICATION.
11	SINGLE HUNG ALUM. WINDOWS COLOR: "GRAY 2020" GLAZING PER SPECIFICATION.
12	203 x 203 mm ACCENT BLOCK (8" x 8") COLOR: "PRECISION CHOCOLATE"
13	C.M.U. OPENING
14	C.M.U. SILL BLOCK COLOR: "CHOCOLATE"
15	METAL RAILING METAL RAILING COLOR: "OLD TOWN GRAY"
16	WALL MOUNTED TELEPHONES
17	ACCENT PRECISION BLOCK COLOR: "CHOCOLATE"
18	5mm (2") STUCCO REVEAL SEE DETAIL C3/A31
19	GALVANIZED TUBE STEEL COLUMN 102mm x 102mm (4" x 4") COLOR: "OLD TOWN GRAY"
20	LOCATION OF SEISMIC SEPARATION

NOTES

- 1 STANDING SEAM METAL ROOF - 102.305mm ROOF SLOPE
COLOR: "COLONIAL RED" (4:12)
- 2 LOUVER - SEE DETAIL C4/A31
COLOR: "OLD TOWN GRAY"
- 3 254mm (10") MASONRY BLOCK - SPLIT FACE
BASE BLOCK COLOR: "CHOCOLATE"
- 4 203mm (8") MASONRY BLOCK - SPLIT FACE
MAIN BLOCK COLOR: "CASTLE GRAY"
- 5 CEMENT PLASTER OVER 152mm (6") CONC. BLOCK
STUCCO COLOR: "EXPO COLOR #45"
- 6 METAL DOWNSPOUT CENTER BETWEEN WINDOWS (TYPICAL)
COLOR: "OLD TOWN GRAY"
- 7 METAL GLITTER
COLOR: "COLONIAL RED"
- 8 METAL LOUVER SUNSHADE - PREFINISH SOUTH FACING
SEE DETAIL D4/A33. COLOR: "COLONIAL RED"
- 9 STANDING SEAM METAL CANOPY - 102.305mm ROOF SLOPE
COLOR: "COLONIAL RED" (4:12)
- 10 SPANDREL PANEL
GLAZING PER SPECIFICATION.
- 11 SINGLE HUNG ALUM. WINDOWS COLOR: "GRAY 2020"
GLAZING PER SPECIFICATION.
- 12 203 x 203 mm ACCENT BLOCK
(8" x 8") COLOR: "PRECISION CHOCOLATE"
- 13 C.M.U. OPENING
- 14 C.M.U. SILL BLOCK
COLOR: "CHOCOLATE"
- 15 METAL RAILING
METAL RAILING COLOR: "OLD TOWN GRAY"
- 16 WALL MOUNTED TELEPHONES
- 17 ACCENT PRECISION BLOCK COLOR: "CHOCOLATE"
- 18 5mm (2") STUCCO REVEAL SEE DETAIL C3/A31
- 19 GALVANIZED TUBE STEEL COLUMN 102mm x 102mm
(4" x 4") COLOR: "OLD TOWN GRAY"
- 20 LOCATION OF SEISMIC SEPARATION



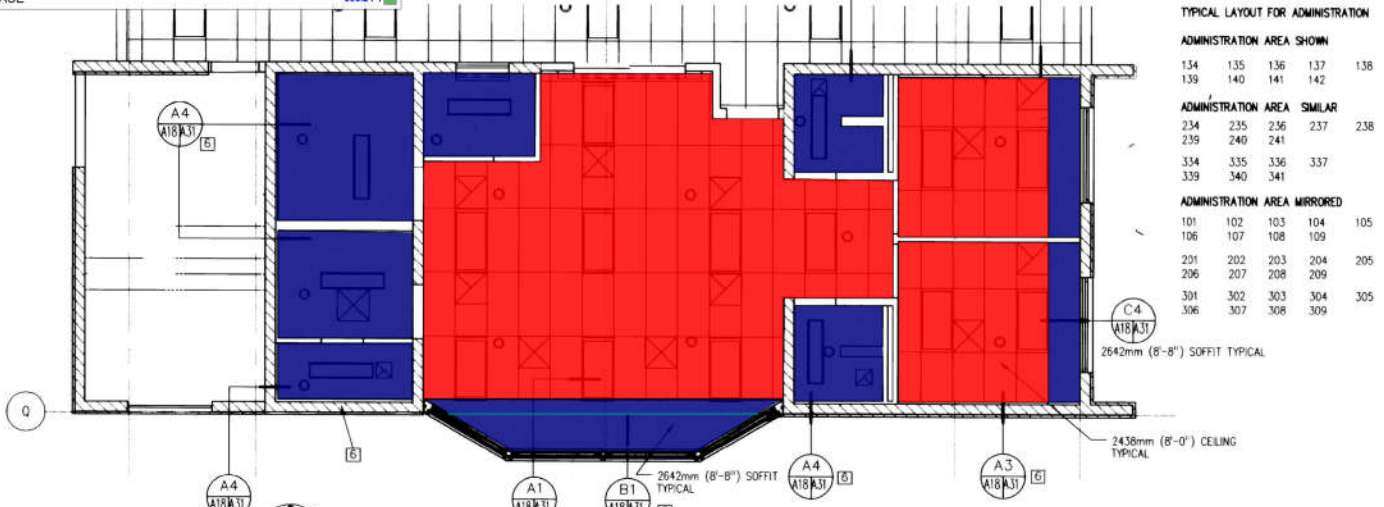
ARCHITECT
GARY A. HOOPER
1000 JEFFERSON PARKWAY, SUITE 100
SAN ANTONIO, TEXAS 78205



WALL TYPE 9A	139.2 FT
WALL TYPE 9B	86.4 FT
WALL TYPE 9C	6.7 FT
WALL TYPE 1	86.6 FT
WALL TYPE 2	51.9 FT
WALL TYPE 1C	11.6 FT
WALL TYPE 1B	27.1 FT
WALL TYPE 4	42.9 FT
WALL TYPE 1A	57.9 FT
WALL TYPE 3	190.2 FT
5/8" GYPSUM BOARD CEILING	824.2 SQ FT
2'-0" SOFFIT	41.6 FT
2'x4' Acoustical ceiling	1476.9 SQ FT
CERAMIC Wall TILE	163.8 FT
D- PAINT ENAMEL SEMI -GLOSS (2'-0" H) FACTORY FINISH	163.9 FT
C- PAINT EGGSHELL	593.2 FT
CERMAIC TILE BASE	593.2 FT
6- VINLY COVE BASE	593.2 FT

TYPICAL ADMIN AREA

C OF VERTICAL AXIS



TYPICAL LAYOUT FOR ADMINISTRATION

ADMINISTRATION AREA SHOWN					
134	135	136	137	138	
139	140	141	142		
ADMINISTRATION AREA SIMILAR					
234	235	236	237	238	
239	240	241			
334	335	336	337		
339	340	341			
ADMINISTRATION AREA MIRRORED					
101	102	103	104	105	
106	107	108	109		
201	202	203	204	205	
206	207	208	209		
301	302	303	304	305	
306	307	308	309		

D1 ENLARGED RCP-TYPICAL ADMIN. AREA
A4A19 SCALE: 1:50

LEGEND

- FULL HEIGHT WALL
- PARTITION WALL TYPE
- GYPSUM BOARD CEILING
SEE DETAIL (C)
- 305mm x 1220mm (1' x 4')
FLUORESCENT CEILING LIGHT FIXTURE
- 610mm x 1200mm (2' x 4')
FLUORESCENT CEILING LIGHT FIXTURE
- 610mm x 1200mm (2' x 4')
LAY-IN TILE CEILING
- RETURN REGISTER
SEE MECH. DRAWINGS FOR SIZE
- CEILING DIFFUSER
SEE MECH. DRAWINGS FOR SIZE
- EXHAUST REGISTER
SEE MECH. DRAWINGS FOR SIZE
- RETURN AIR DUCT
SEE MECH. DRAWINGS FOR SIZE
- SUPPLY AIR DUCT
SEE MECH. DRAWINGS FOR SIZE
- EXHAUST AIR DUCT
SEE MECH. DRAWINGS FOR SIZE
- EXIT LIGHT
- WALL MOUNTED LIGHT
- SMOKE DETECTOR
- SPRINKLER HEADS
SURFACE MOUNTED OR
SIDEWALL MOUNTED
- SEE SHEETS A11 & A28
FOR WALL CONSTRUCTION

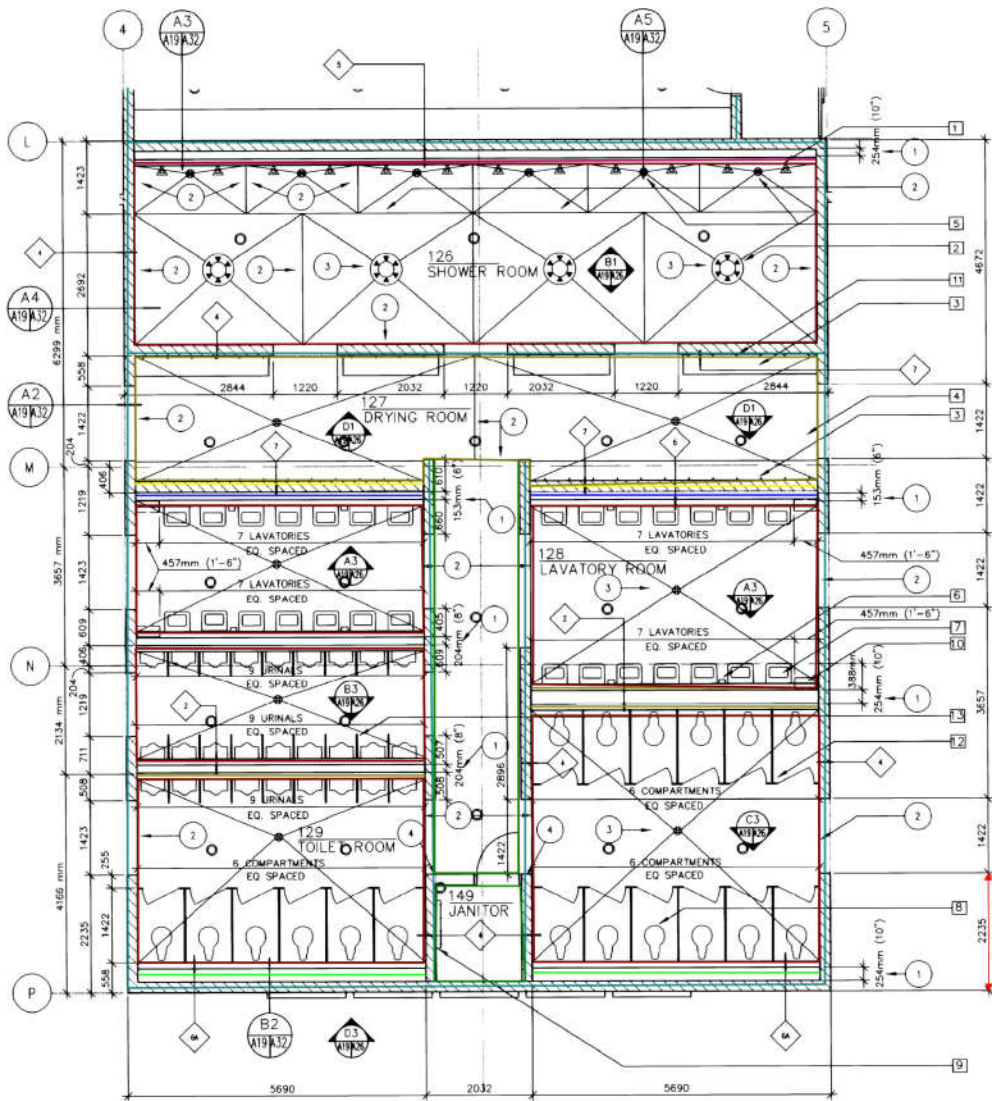
NOTES

- [1] FOR EXTERIOR WALL TYPES SEE FLOOR PLAN ON SHEETS A1, A2, A3
- [2] LOCKERS (DFG)
- [3] METAL SHELVES
- [4] MAIL BOXES
- [5] FLOOR MOUNTED BENCH
- [6] PROVIDE DETAIL ALL AROUND ROOM

GRAPHIC SCALE
0 5M 1M 2M
0 10' 5' 10'
SCALE = 1 : 50

NO. C 10976
REN Z. W. L.
STATE OF CALIFORNIA

REGISTERED PROFESSIONAL ENGINEER
EXPIRES 12/31/2024



- WALL TYPE 6A 77.0 FT
- WALL TYPE 4 640.1 FT
- WALL TYPE 7 77.2 FT
- WALL TYPE 6 76.8 FT
- WALL TYPE 2 231.2 FT
- WALL TYPE 5 91.4 FT
- CERAMIC WALL TILE 726.9 FT
- D- PAINT ENAMEL SEMI-GLOSS (2'-0" H) FACTORY FINISH 772.5 FT
- D- PAINT ENAMEL SEMI-GLOSS 344.0 FT
- 6- VINYL COVE BASE 121.8 FT
- C- PAINT -EGGSHELL 48.9 FT
- CERAMIC TILE BASE 48.9 FT

- ### ACCESSORY LEGEND
- 1 SHOWER HEADS
 - 2 COLUMN SHOWER WITH SOAP RING
 - 3 FLOOR MOUNTED BENCH
 - 4 TILE FLOOR
 - 5 FLOOR DRAINS TYP. (SEE PLUMBING DRAWINGS) SLOPE FLOOR TO DRAIN
 - 6 SOAP DISPENSER - SURFACE MTD.
 - 7 LAVATORIES
 - 8 TOILET SEAT COVER HOLDER TYPICAL PER COMPARTMENT
 - 9 MOP RACK
 - 10 PAPER TOWEL DISPENSER AND WASTE RECEPTACLE
 - 11 ROBE HOOKS (1524mm (5'-0") ABOVE FINISH FLOOR)
 - 12 TOILET COMPARTMENT PARTITIONS
 - 13 URINAL SCREEN WALL MOUNTED

- ### LEGEND
- ◆ SEE SHEETS A11 & A28 FOR WALL CONSTRUCTION
 - ⊕ — [5]
- NOTE:
ALL DIMENSIONS ARE IN MILLIMETERS - U.O.N.

- ### NOTES
- 1 INSIDE CLEAR DIMENSION
 - 2 HIGH POINT
 - 3 THIN SET CERAMIC TILE (SLOPE FLOOR TO DRAIN TYP.)
 - 4 ALIGN FACE OF FINISH

TYPICAL LAYOUT FOR TOILET/SHOWER ROOM

TOILET/SHOWER ROOM SHOWN

126	127	128	129	149
-----	-----	-----	-----	-----

TOILET/SHOWER ROOM SIMILAR

226	227	228	229	246
326	327	328	329	346

TOILET/SHOWER ROOM MIRRORED

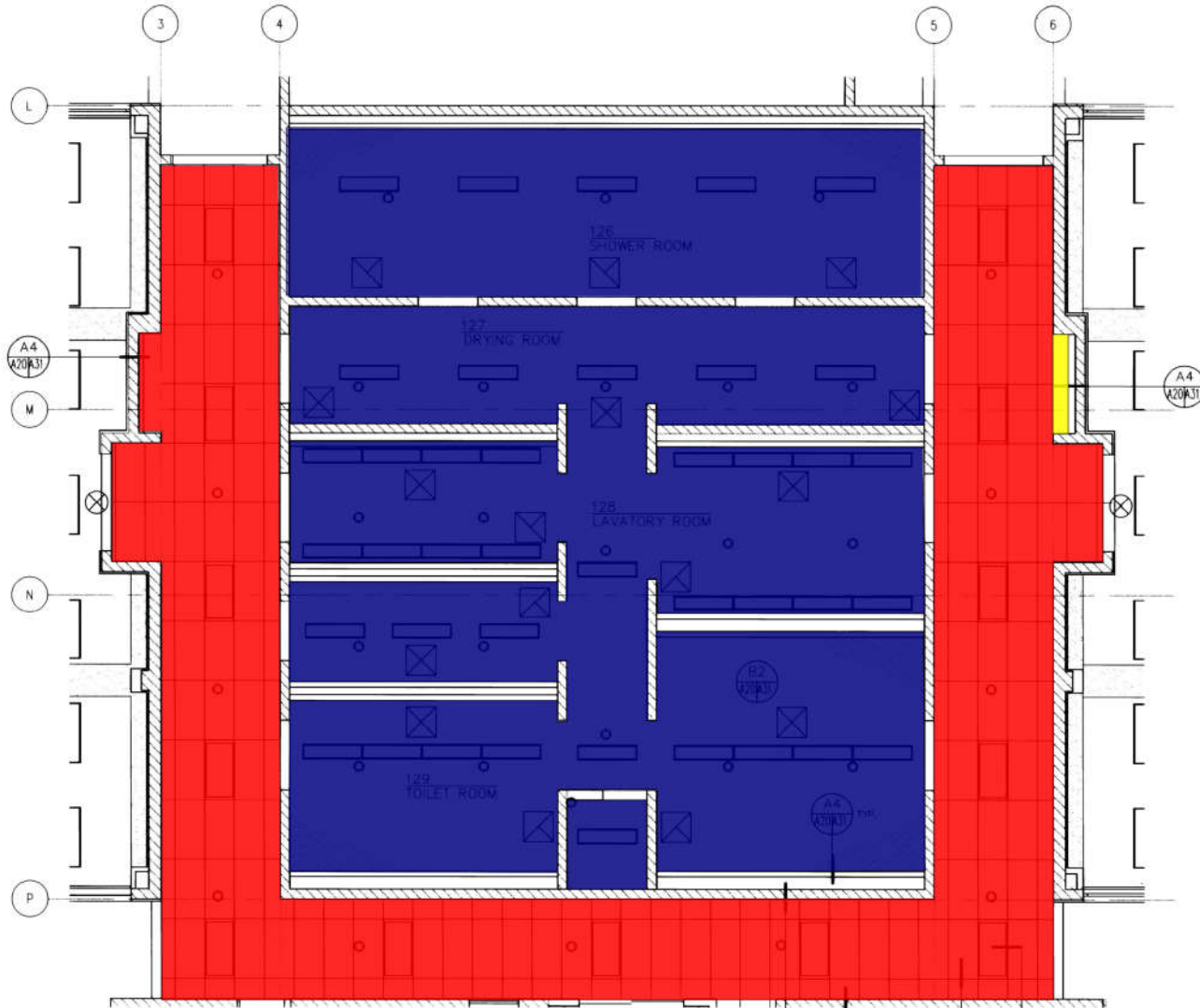
119	118	117	116	115
219	218	217	216	215
319	318	317	316	315

GRAPHIC SCALE

0 5M 1M 2M

SCALE = 1 : 50

D1 ENLARGED FLP-TYPICAL TOILET/SHOWER ROOM
A119 SCALE: 1:50



ACCESSORY LEGEND

- FULL HEIGHT WALL
- PARTITION WALL TYPE
- GYPSUM BOARD CEILING
- 305mm X 1220mm (1' X 4') FLUORESCENT CEILING LIGHT FIXTURE
- 610mm X 1200mm (2' X 4') FLUORESCENT CEILING LIGHT FIXTURE
- 610mm X 1200mm (2' X 4') LAY-IN TILE CEILING
- RETURN REGISTER SEE MECH. DRAWINGS FOR SIZE
- CEILING DIFFUSER SEE MECH. DRAWINGS FOR SIZE
- EXHAUST REGISTER SEE MECH. DRAWINGS FOR SIZE
- RETURN AIR DUCT SEE MECH. DRAWINGS FOR SIZE
- SUPPLY AIR DUCT SEE MECH. DRAWINGS FOR SIZE
- EXHAUST AIR DUCT SEE MECH. DRAWINGS FOR SIZE
- EXIT LIGHT
- WALL MOUNTED LIGHT
- SMOKE DETECTOR
- SPRINKLER HEADS SURFACE MOUNTED OR SIDEWALL MOUNTED

NOTES

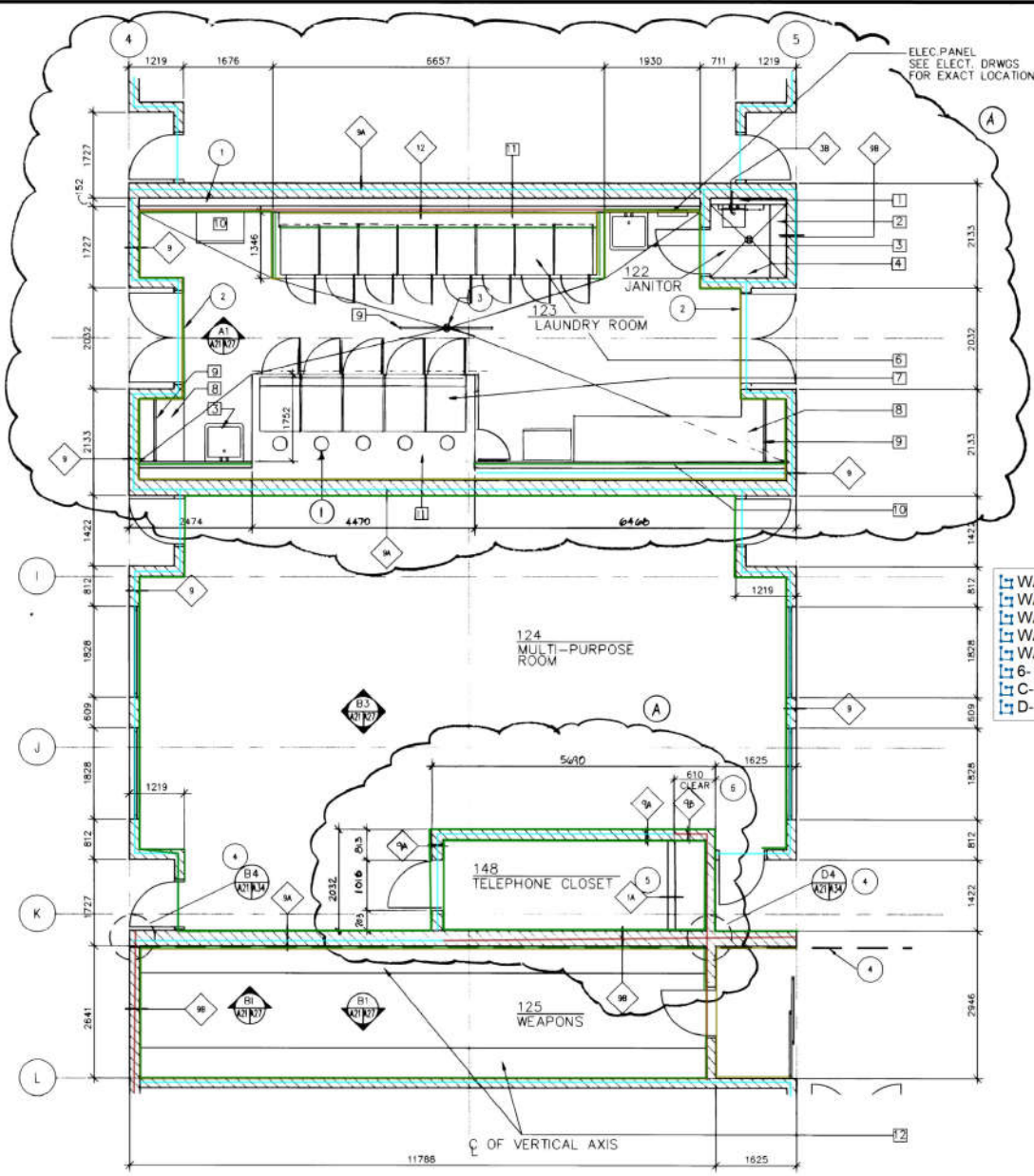
GRAPHIC SCALE

0 5M 1M 2M
 0 5' 10' 20'
 SCALE = 1 : 50

REGISTERED ARCHITECT
 LARRY A. HOEDEMEYER
 NO. C 10078
 STATE OF CALIFORNIA

- 5/8" GYPSUM BOARD CEILING 4470.3 SQ FT
- 2'x4' Accoustical ceiling 2863.1 SQ FT
- 5/8" GYPSUM BOARD OR (CONC... 15.9 SQ FT

D1 ENLARGED RCP-TYPICAL TOILET/SHOWER ROOM
 SCALE: 1:50



ELEC. PANEL
SEE ELECT. DRAWING
FOR EXACT LOCATION

- WALL TYPE 9 226.6 FT
- WALL TYPE 9A 139.2 FT
- WALL TYPE 9B 56.3 FT
- WALL TYPE 12 39.6 FT
- WALL TYPE 10 39.3 FT
- 6- VINYL COVE BASE 401.2 FT
- C- PAINT -EGGSHELL 426.2 FT
- D- PAINT ENAMEL SEMI -GLOSS 414.9 FT

TYPICAL LAYOUT FOR LAUNDRY/MULTI PURPOSE ROOM

LAUNDRY MULTI PURPOSE ROOM SHOWN

122	123	124	125	148
-----	-----	-----	-----	-----

LAUNDRY MULTI PURPOSE ROOM SIMILAR

222	223	224	225
322	323	324	325

LAUNDRY MULTI PURPOSE ROOM MIRROR

121	120	147
221	220	
321	320	

ACCESSORY LEGEND

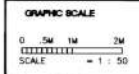
- 1 FLOOR MOUNTED JANITOR'S SINK
- 2 3 SHELVES (1.68M)
- 3 UTILITY SINK
- 4 MOP RACK
- 5 1.83M (6'-0") HIGH CLOTHES HANGING ROD
- 6 WASHERS (5 TOTAL GFG)
- 7 DRYERS (5 TOTAL GFG)
- 8 FOLDING COUNTER (900mm DEEP)
- 9 CLOTHES HANGING ROD
- 10 LAUNDRY VENDING MACHINES (2 GFG)
- 11 102mm (4") HIGH CONC. PAD
- 12 RACKS/SHELVING (GFG)

LEGEND

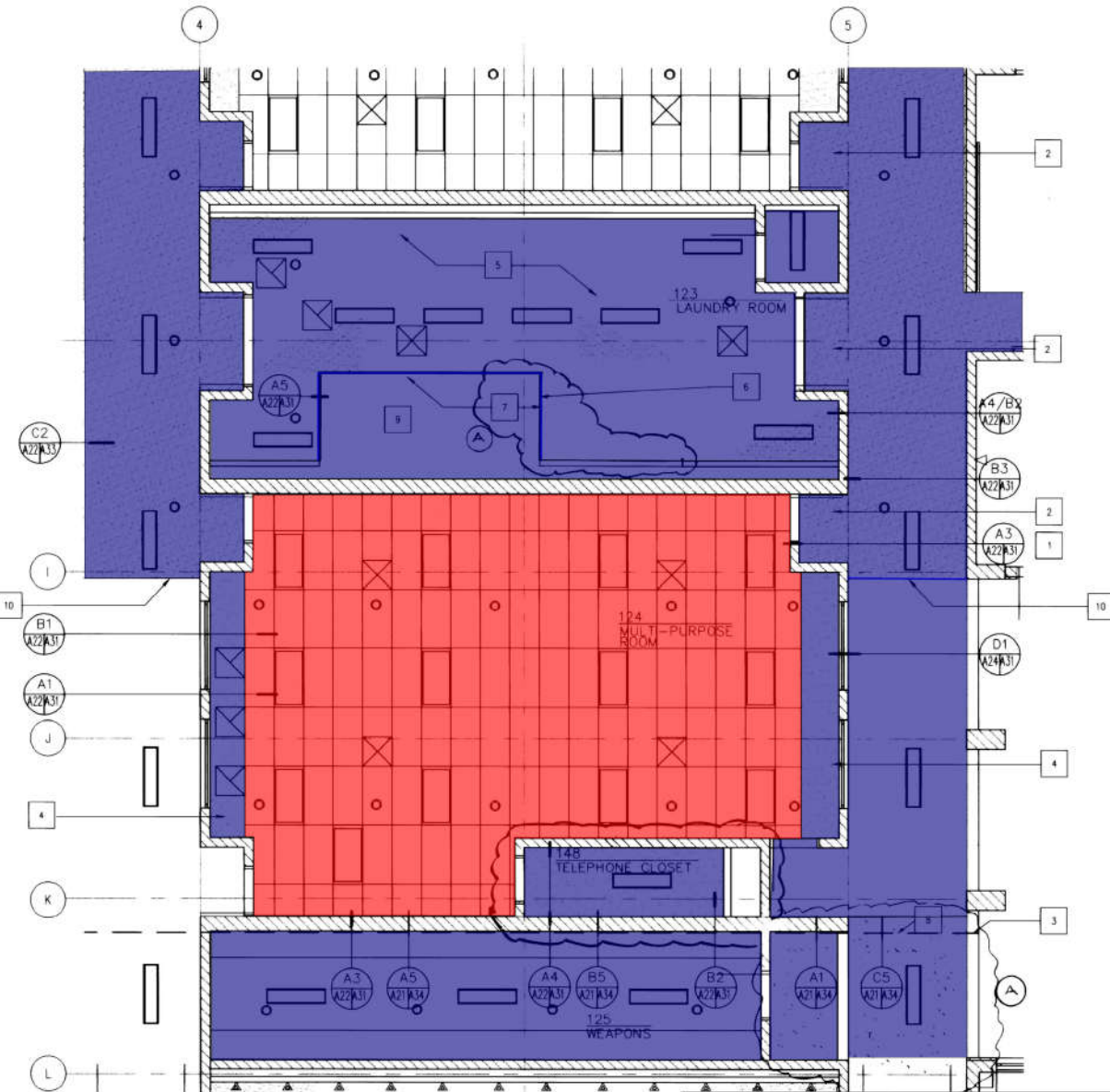
- ◇ TYPICAL WALL SYMBOL SEE SHEET A11 & A28 FOR WALL TYPES
 - ⊕ FLOOR DRAIN SEE NOTE #3
- NOTE:
ALL DIMENSIONS ARE IN MILLIMETERS - U.O.N.

NOTES

- 1 DRYER EXHAUST DUCT UP SEE MECHANICAL DRAWINGS FOR CONTINUATION
- 2 SLAB HIGH POINT SLOPE TO DRAIN
- 3 FLOOR DRAINS - SEE DETAIL B5
- 4 SEISMIC JOINT TYPICAL AT 2nd, 3rd, AND THRU CONCRETE ROOF SLAB
- 5 PROVIDE FIRE RATED WALL ACCESS PANEL FIELD VERIFY SIZE.
- 6 PIPE CHASE CLEAR INSIDE DIMENSION



D1 ENLARGED FLOOR PLAN /TYPICAL LAUNDRY/MULTI PURPOSE ROOM
SCALE: 1:50



ACCESSORY LEGEND

	FULL HEIGHT WALL
	PARTITION WALL TYPE
	GYPSUM BOARD CEILING OR EXTERIOR PLASTER CEMENT SOFFIT
	305mm x 1220mm (1' x 4') FLUORESCENT CEILING LIGHT FIXTURE
	610mm x 1220mm (2' x 4') FLUORESCENT CEILING LIGHT FIXTURE
	610mm x 1220mm (2' x 4') LAY-IN TILE CEILING
	RETURN REGISTER SEE MECH. DRAWINGS FOR SIZE
	CEILING DIFFUSER SEE MECH. DRAWINGS FOR SIZE
	EXHAUST REGISTER SEE MECH. DRAWINGS FOR SIZE
	RETURN AIR DUCT SEE MECH. DRAWINGS FOR SIZE
	SUPPLY AIR DUCT SEE MECH. DRAWINGS FOR SIZE
	EXHAUST AIR DUCT SEE MECH. DRAWINGS FOR SIZE
	SOFFIT LOUVER
	EXIT LIGHT
	WALL MOUNTED LIGHT
	SMOKE DETECTOR
	SPRINKLER HEADS
	SURFACE MOUNTED OR SIDEWALL MOUNTED

- ### NOTES
- 1 DETAIL TYPICAL
 - 2 EXTERIOR CEMENT PLASTER SOFFIT
 - 3 CONCRETE CURB AT 2nd AND 3rd FLOOR BALCONY. SEE DETAIL C2/A34 FOR SEISMIC SEPARATION.
 - 4 GYPSUM BOARD SOFFIT 2642mm (8'-8") A.F.F TYPICAL
 - 5 GYPSUM BOARD CEILING 2438mm 2438mm (8'-0") A.F.F TYPICAL
 - 6 152mm (6") HIGH EDGE AT SOFFIT EDGE.
 - 7 OPEN NO CEILING ABOVE DRYERS
 - 8 SEISMIC JOINT TYPICAL AT 2nd, 3rd, AND THRU CONCRETE ROOF SLAB
 - 9 BEFORE THE INSTALLATION OF THE CEILING IN THE LAUNDRY ROOM, THE GENERAL CONTRACTOR IS TO VERIFY THE ACTUAL PHYSICAL DIMENSIONS AND CLEARANCES THAT ARE REQUIRED BY THE EQUIPMENT MANUFACTURER. REVISE THE CEILING PLAN TO ACCOMMODATE THE NEW EQUIPMENT REQUIREMENTS. PROVIDE REVISE PLANS TO THE ROCC AND ARCHITECT FOR APPROVAL IF CHANGES ARE REQUIRED.
 - 10 LAUNDRY ROOM EXHAUST LOUVER IN SIDE OF SOFFIT. TYPICAL BOTH SIDES OF ROOM.

TYPICAL LAYOUT FOR LAUNDRY/MULTI PURPOSE ROOM

LAUNDRY MULTI PURPOSE ROOM SHOWN
122 123 124 125 148

LAUNDRY MULTI PURPOSE ROOM SIMILAR
222 223 224 225
322 323 324 325

LAUNDRY MULTI PURPOSE ROOM MIRRORED

121	122	2486.7 SQ FT
121	122	37.5 FT
121	122	1112.0 SQ FT

- 5/8" GYPSUM BOARD CEILING
- 6" SOFFIT
- 2'x4' Accoustical ceiling

D1 ENLARGED RCP-TYPICAL LAUNDRY/MULTI PURPOSE ROOM
SCALE: 1:50

GRAPHIC SCALE
0 5M 1M 2M
0 5 10 20
SCALE = 1 : 50

LICENSED ARCHITECT
BENNY A. ROSENBERG
NO. C 10078
BEN L. 1414
STATE OF CALIFORNIA

ADMITTED TO PRACTICE ARCHITECTURE
IN THE STATE OF CALIFORNIA
ON 05/20/1988

LEGEND

SEE SHEETS A28 FOR INTERIOR WALL CONSTRUCTION

NOTE:
ALL DIMENSIONS ARE IN MILLIMETERS - U.O.N.

NOTES

- 1 203mm X 305mm (8" X 12") CLEAR INSIDE CHASE FOR MECHANICAL PIPING (TYPICAL AT EACH CORNER) SEE DETAIL D4/A31.
- 2 SEE FLOOR PLANS FOR WINDOW TYPES
- 3 WALL MOUNTED RADIANT HEATING SEE MECHANICAL DRAWINGS FOR LOCATION (TYPICAL)
- 4 305mm X 305mm (12" X 12") CONCRETE COLUMN. SEE STRUCTURAL DRAWINGS FOR LOCATION. COLUMN TO BE EXPOSED.
- 5 ALIGN FACE OF FINISHES.

GRAPHIC SCALE
0 5M 1M 2M
SCALE = 1 : 50



REGISTERED UNDER ARCHITECTURE
BY STATE OF CALIFORNIA

WALL TYPE 9A	213.2 FT	
WALL TYPE 9B	329.3 FT	
WALL TYPE 3B	114.1 FT	
WALL TYPE 6	50.0 FT	
C- PAINT -EGGSHELL	1299.0 FT	
6" CERMAIC TILE BASE	1299.0 FT	

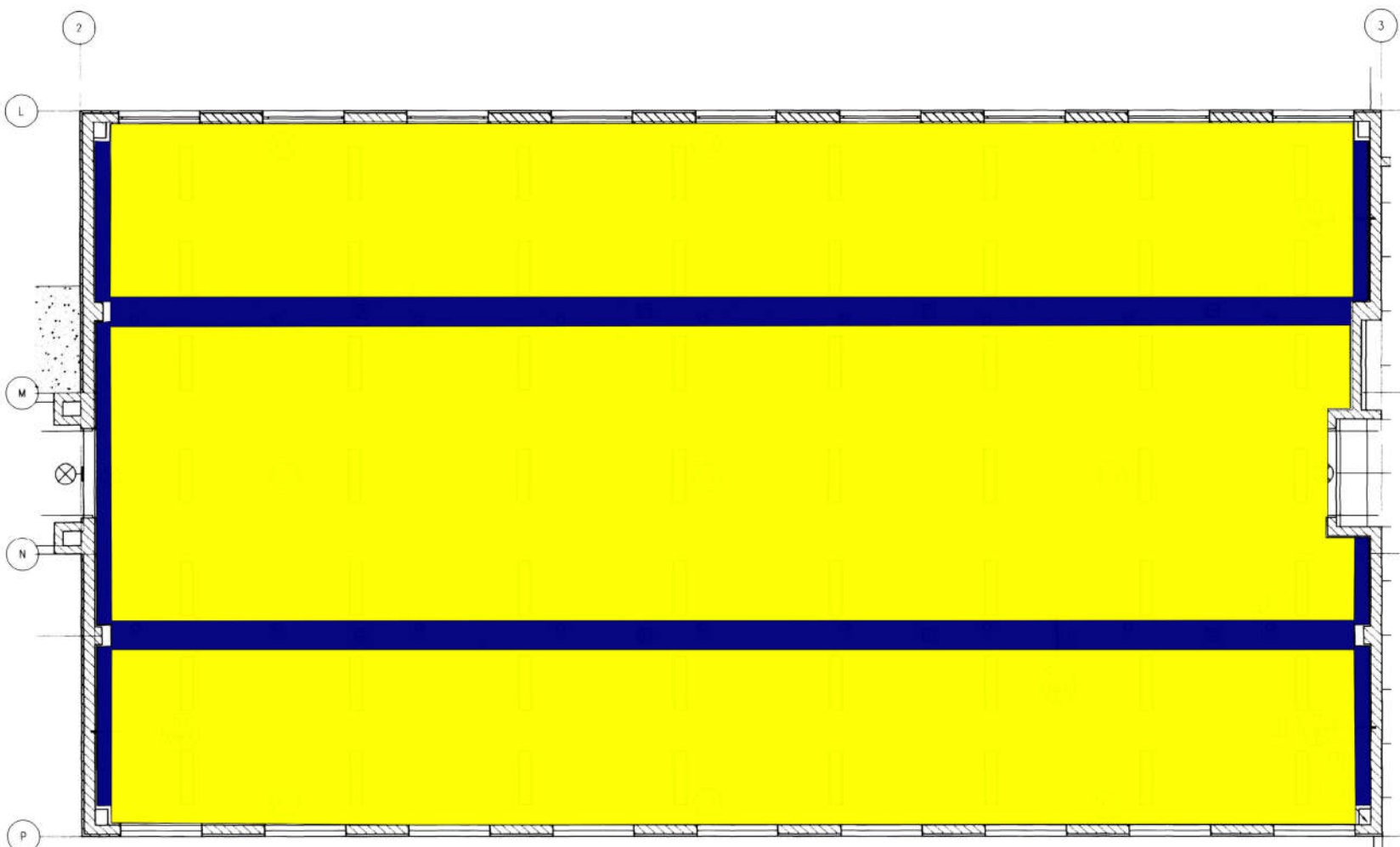
SQUAD BAY # 4

TYPICAL LAYOUT FOR SQUAD BAY # 4


















SQUAD BAY # 4 SHOWN	SQUAD BAY # 3 OPPOSITE HAND
143	130
SQUAD BAY # 4 SIMILAR	230
243	330
343	
SQUAD BAY # 2 MIRRORRED	SQUAD BAY # 4 OPPOSITE MIRRORRED
110	110
114	210
214	310
314	

D1 ENLARGED FLP-TYPICAL SQUAD BAY
SCALE: 1:50





LEGEND

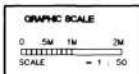
-  FULL HEIGHT WALL
-  PARTITION WALL TYPE
-  GYPSUM BOARD CEILING
-  305mm X 1220 mm (1' X 4') FLUORESCENT CEILING LIGHT FIXTURE
-  610mm X 1220mm (2' X 4') FLUORESCENT CEILING LIGHT FIXTURE
-  610mm X 1220mm (2' X 4') LAY-IN TILE CEILING
-  RETURN REGISTER
SEE MECH. DRAWINGS FOR SIZE
-  CEILING DIFFUSER
SEE MECH. DRAWINGS FOR SIZE
-  EXHAUST REGISTER
SEE MECH. DRAWINGS FOR SIZE
-  RETURN AIR DUCT
SEE MECH. DRAWINGS FOR SIZE
-  SUPPLY AIR DUCT
SEE MECH. DRAWINGS FOR SIZE
-  EXHAUST AIR DUCT
SEE MECH. DRAWINGS FOR SIZE
-  EXIT LIGHT
-  WALL MOUNTED LIGHT
-  SMOKE DETECTOR
-  SPRINKLER HEADS
SURFACE MOUNTED OR
-  SIDEWALL MOUNTED

NOTES

- 1 ALIGN EDGE OF SOFFIT WITH EDGE OF WALL FURRING
- 2 203mm X 305mm (8" X 12") CLEAR INSIDE DIM. CHASE
- 3 SEE DETAILS FOR DIMENSIONS
- 4 305mm X 305mm (12" X 12") CONCRETE COLUMN UP THRU FLOOR TYPICAL

 5/8" GYPSUM BOARD CEILING	2174.5 SQ FT 
 5/8" GYPSUM BOARD OR (CONCRETE) CEILING	19790.4 SQ FT 

D1 ENLARGED RCP-TYPICAL SQUAD BAY
SCALE: 1:50



REGISTERED ARCHITECT
STATE OF CALIFORNIA